

FRIENDS OF THE EMM BROOK

"Protecting and enhancing the Emm Brook and its floodplain for wildlife and people"

NEWSLETTER NO 9

WWW.EMMBROOK.ORG.UK

DECEMBER 2007

Question 1 Could we increase the number of WILDFLOWERS growing near the Emm Brook?

First we needed to know what already grows in the area so we negotiated with WBC to leave a large circle of grass un-mown for the spring /summer of 2007. It began well and on the 18th May Sue Farrington and Doreen Dye recorded 18 species already growing there, and Mike Saynor made some delightful notices to explain our intentions to the public. The patch was left to grow during the extremely wet summer. In late July we went to record what had grown but the WBC had beaten us to it and mowed the patch the day before, **OUCH!!** But we will try again next year. Among the plants recorded in the May survey were Common Mouse Ear, Sheep Sorrel, Goose Grass, Cuckoo Flower, and Yorkshire Fog (a grass).

Question 2 WHAT DO FISHERMEN CATCH IN THE EMM ?



Gudgeon



Chubb



Common Bream

PLUS

Stickleback, Bullhead, Minnow, Dace, Roach, Perch, Pike.

**A total of 10 coarse fish species, with the occasional stray Goldfish or Koi Carp.
Hopefuls dream of Eels and Ruffe and Salmon !**

Fish are sensitive to both drought and flooding, as the water level and water content are important for feeding and habitat. The floods of July 2007 were deeper and more extensive than other recent floods in the area (e.g. November 2000) as many residents know to their cost, and the residents of The Brook itself will have been affected in many different ways.

Advance Notice

**The Friends of the Emm Brook AGM will take place at 8pm
on Tuesday 27th May 2008 at Woosehill Community Centre.
Do come**

**The Friends of the Emm Brook website is currently being updated
www.emmbrook.org.uk**



It's never too early to start the spring cleaning. Even in November!

Below Malcolm Dunsmore cleaning nest boxes to get things ready for next years residents.



RELIEF MAP of the Emm Brook, recently on show at Shute End. Made by Roland Ramsdale of Winnersh



The map shows the strategic siting of Wokingham, on a hill, giving visibility of the whole catchment area of the Brook

Green Day at Dinton Pastures

Saturday August 18th was not the sunniest of days, but FOTEB and many other environmental groups arrived early at Dinton Pastures and set up stalls around the Event Field. It looked most effective – although Jean's balloons took off, never to be seen again.

We chatted to the visitors, signed up some more members, visited the other stalls and endeavoured to keep everything dry. Sadly the publicity had not been effective and the weather probably deterred all but the most determined so there were few members of the public to view what was a most interesting display.

Invertebrates in the Emm Brook

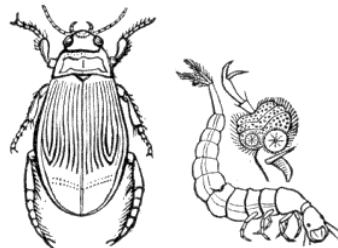
Things like the Alderfly Larva, the Dragon fly, and the Water Beetle (see pictures below) tell us a lot about the quality of the water in the Brook. Rivers are graded on an A –F scale and the Emm is currently graded as B which = good.



Alderfly larva



Dragon Fly



Adult water beetle and larva

Anyone interested in learning more about Invertebrates is welcome to join members of FOTEB on a sampling outing. It's great fun, if sometimes a bit of wet and muddy business.

Look at www.Emmbrook.org.uk for the next dates for sampling. Why not have a go?

NB. website currently being updated.



NOTE : Copies sent by post will be in Black and White due to printing costs.